

Pearl
&
Surface
Treatment
Pigment

TABLE OF CONTENTS

• Pearl Pigment	1
• Surface Coated Powders	2
• P.C.C. (Platy Colorant Complex)	3
• B.C.C. (Bead type Colorant Complex)	4
• Tixen Black	5

PEARL PIGMENT



HELIOS Nature Mica Based Color Pearl Pigment



CYGNUS Synthetic Mica Based Color Pearl Pigment



TIARA Borosilicate glass Based Color Pearl Pigment



TITAN Natural Mica Based Non-Bleeding with Black Titanium Oxide Pearl Pigment



TITAN-TR Borosilicate glass Based Non-Bleeding With Black Titanium Oxide Pearl Pigment



LUCID COVER PEARL Soft focus effect with TiO₂ & SiO₂ Pearl Pigment

MAIN SUBSTRATES FOR SURFACE TREATMENT

Talc



- Mineral composed of hydrated magnesium silicate
- Most widely used substance known as talcum powder
- It occurs as foliated to fibrous masses, and in an exceptionally rare crystal form
- Perfect basal cleavage, and the folia are non-elastic, although slightly flexible
- Softest known mineral and listed as 1 on the Mohs hardness scale

Mica (Muscovite)



- Muscovite is a phyllosilicate mineral of aluminium and potassium
- Highly-perfect basal cleavage yielding remarkably thin lamina
- Highly elastic
- Mohs hardness ; 2-2.25

Sericite



- Fine grained mica, similar to muscovite, illite, or paragonite
- Monoclinic system structure, less potassium and more moisture than mica
- Natural transparency, smooth touch
- Mohs hardness ; 2-2.25

Titanium Dioxide



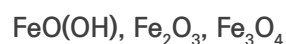
- Titanium(IV) oxide or titania, is the naturally occurring oxide of titanium
- Used as a pigment is called titanium white, Pigment White 6, or CI 77891
- Generally it is sourced from, rutile and anatase
- Wide range of applications, from paint to sunscreen for UV B protection

Zinc Oxide



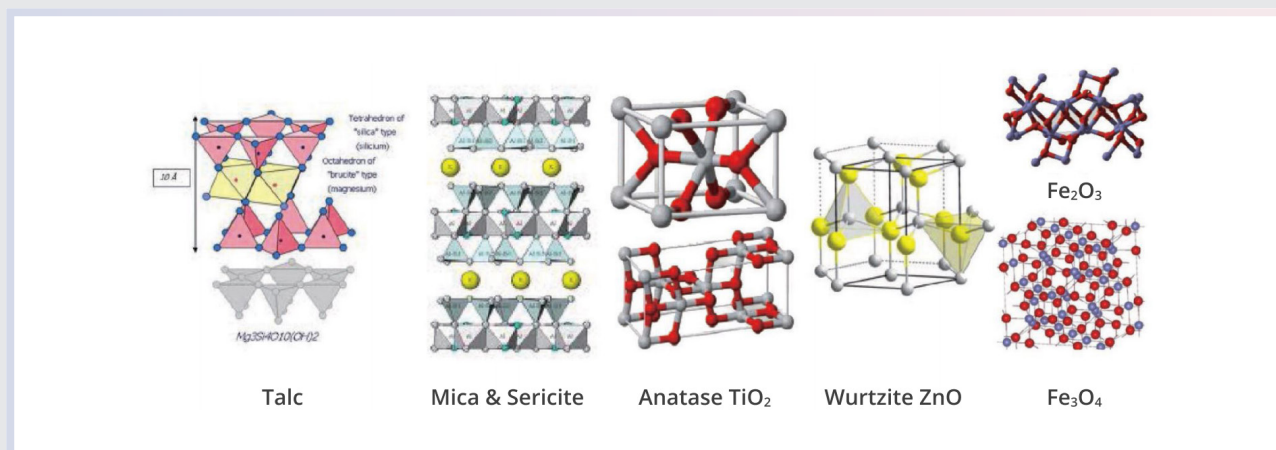
- Zinc oxide is an inorganic compound which is produced synthetically
- Soft material with hardness of 4.5 on the Mohs scale
- Crystallizes in two main forms, hexagonal wurtzite and cubic zincblende
- Antimicrobial action
- UV-A Protection

Iron Oxide



- Iron oxide is an inorganic compound which is produced synthetically
- $\text{FeO}(\text{OH})$ is needle shape's Yellow colorant
- Fe_2O_3 is α and γ , iron adopts octahedral coordination geometry
- Fe_3O_4 (CI 77499) has discontinuity in the structure, conductivity and magnetic properties

MAIN SUBSTRATE CHEMICAL STRUCTURE



COATING SUBSTRATE

Coating Agent	Use Advantage	Remark
Methicone	<ul style="list-style-type: none"> • More free flowing and slipping effect • Very low surface tension and excellent hydrophobicity • Stable at PH of 3.9 • Matt feeling on the skin • Good for wet/dry powder, W/S Foundation formulation 	
Dimethicone	<ul style="list-style-type: none"> • More slipping effect and lubricious feeling than Methicone • No Hydrogen potential • Less hydrophobic than Methicone • Good for wet/dry powder, W/S Foundation formulation 	
Triethoxy caprylsilane	<ul style="list-style-type: none"> • Very reactive surface-treating agent (hydrolysis of Si-O bond) • Lipophilic and caprylyl groups are easily dispersed in esters, mineral oils, silicon fluids • Stable at pH3 • Nice spreadability, creamy, wet feeling 	
Dimethiconol Stearate	<ul style="list-style-type: none"> • Reduced flaking and bleeding in color products • Improved moisture retention • Improved product slip and pay off • Better coverage • Emollient barrier property • Excellent Skin feeling 	
Lauroyl Lysine	<ul style="list-style-type: none"> • Nature ingredient derived from coconut and palm oils • Improves the cushion, bounce and slip of the product and compressibility • Surface-treated pigment is softer, silkier, smoother • Oil and water-resistant 	
Hydrogenated Lecithin	<ul style="list-style-type: none"> • Anti-oxidant, moisturizing and emollient properties • Fairly hydrophobic yet moisturizing • Creamy feeling and excellent affinity to the skin • Moisture feeling 	
Magnesium Myristate	<ul style="list-style-type: none"> • Improved adhesion of product • Resistant to natural oils and perspiration of skin • Keeping make up more fresh and color-stable • Increase the surface smoothness & soft feeling 	
Aluminium Sterate	<ul style="list-style-type: none"> • Improved adhesion of product • Resistant to natural oils and perspiration of skin • Keeping make up more fresh and color-stable • Anti-caking effect 	
Zinc Sterate	<ul style="list-style-type: none"> • Improved adhesion of product • Resistant to natural oils and perspiration of skin • Keeping make up more fresh and color-stable 	
Dimethicone/ Vinyl dimethicone Crosspolymer	<ul style="list-style-type: none"> • Hydrophobic • Soft Cushioning Texture • Good Spreading on the skin 	
Jojoba Ester	<ul style="list-style-type: none"> • Coating is stable and does not turn rancid upon heating • Creamy feeling and good affinity to the skin • Good press ability 	

SURFACE COATED POWDER

Treatment		Description	Substrates	Benefits	Usage	
Silicone	Methicone	Polymethylhydrosiloxane	Talc, Mica Sericite, TiO ₂ , ZnO, Silica	Excellent affinity of skin Hydrophobic	Foundation Two way cake Loose powder	
	Dimethicone	Polydimethylsiloxane	Talc, Mica Sericite, TiO ₂ , ZnO, Silica	Excellent affinity of skin Hydrophobic	Foundation Two way cake Loose powder	
	Silane	Triethoxycaprylylsilane	Talc, Mica Sericite, TiO ₂ , ZnO	Excellent affinity of skin Very Hydrophobic	Foundation Two way cake Loose powder	
	Fluoro Compound	Trifluoropropyl methylhydrogen siloxane	Talc, Mica Sericite, TiO ₂ , ZnO	Long lasting effect Minimal color change on skin	Eye Shadow Loose powder	
Lecithin		Hydroganated Lecithin	Talc, Mica Sericite, Silica	Softness feeling Superior Moisturizing	Eye shadow Loose powder	
Amino acid		Lauroyl Lysine (vegetable)	Talc, Mica, Sericite	Moist feeling Water repellency	Eye shadow Loose powder	
		Sodium Stearoyl Glutamate				
		Disodium Stearoyl Glutamate				
		Aluminum Lauroyl Glutamate				
Metal soap	Myrystates Stearate	Aluminium Stearate Aluminium Myrystate Magnesium Stearate	Talc, Mica, Sericite	Excellent skin adhesion Superior binding effect	Foundation Two way cake Loose powder	
Wax		Silicone	Talc, Mica, Sericite	Creamy feeling Excellent skin adhesion	Foundation Two way cake Loose powder	
		Bees	Bees wax	Talc, Mica, Sericite	Creamy feeling Excellent skin adhesion Superior binding effect	Foundation Two way cake Loose powder
		Polyethylene	Polyehlene wax	Talc, Mica, Sericite	Creamy feeling Excellent skin adhesion Superior binding effect	Foundation Two way cake Loose powder

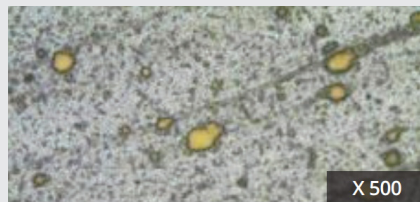
Platy Colorant Complex

Ingredients	Composition(%)	Remark
Platy pigments	50 ~ 85	Based Platy pigment
(TiO ₂)	(10 ~ 30)	(for brightness & covering effects)
Colorant	15 ~ 50	for coloring effects with High chroma

CHARACTERISTICS

Polarization microscope (X500)

Y#5 Lake

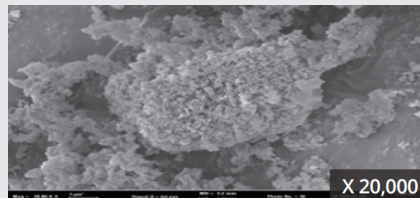


PCC - Y#5

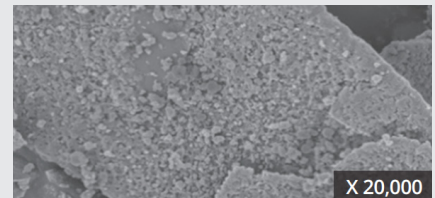


SEM Images

Y#5 Lake



PCC - Y#5










- Uniform Dispersion : No High Stress Dispersion
 - Simplification of manufacturing process : Reduce the time & energy
 - Safety & Stability : Meet the Cosmetic's regulation
 - Good texture : Soft Feeling
 - Excellent Color expression : High Chroma & Saturation
 - Prevent Color bleeding : Good & safety application in slurry formulation
-

P.C.C

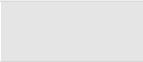
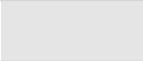





APPLICATION

- Make up
- Lipstick
- Eye shadow
- Blush on Rouge
- Foundation
- BB Cream
- Mascara & Eye liner

P.C.C. Organic Colorants

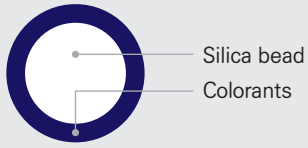
Product name	color	Available Base				Colorants	Colorants wt(%)	Remarks
		Mica	Syn-mica	Sericite	Mica / TiO ₂			
PCC-R#6		●	●	●	●	Red#6 Lake	15	
PCC-R#7		●	●	●	●	Red#7 Lake	15	
PCC-R#27		●	●	●	●	Red#27 Lake	15	
PCC-R#28		●	●	●	●	Red#28 Lake	15	For available surface treatment
PCC-R#30		●	●	●	●	Red#30 Lake	15	• Methicone
PCC-R#40		●	●	●	●	Red#40 Lake	50	• Dimethicone
PCC-Carmine		●	●	●	●	Carmine	40	• Triethoxy caprylsilane -Hydrophobic and soft feeling
PCC-Y#5		●	●	●	●	Yellow#5 Lake	50	• Hydro PS
PCC-Y#6		●	●	●	●	Yellow#6 Lake	50	- Coated with Hydrophilic Silane compounds - Excellent water dispersible
PCC-M.V		●	●	●	●	Manganese Violet	40	
PCC-U.M.B		●	●	●	●	Ultra Marine Blue	40	
PCC-Blue#1		●	●	●	●	Blue#1	40	

P.C.C Inorganic Colorants

Product name	color	Available Base				Colorants	Colorants wt(%)	Remarks
		Mica	Syn-mica	Sericite	Mica / TiO ₂			
PCC-ZnO		●	●	●	●	ZnO	50	For available surface treatment
PCC-TiO ₂		●	●	●	●	TiO ₂	50	
PCC-IOY		●	●	●	●	FeO(OH)	50	• Methicone
PCC-IOR		●	●	●	●	Fe ₂ O ₃	50	• Dimethicone
PCC-IOB		●	●	●	●	Fe ₃ O ₄	50	• Triethoxy caprylsilane -Hydrophobic and soft feeling
PCC-IOBr		●	●	●	●		50	• Hydro PS
PCC-Blue		●	●	●	●	Ferric Ferrocyanide	20	- Coated with Hydrophilic Silane compounds - Excellent water dispersible

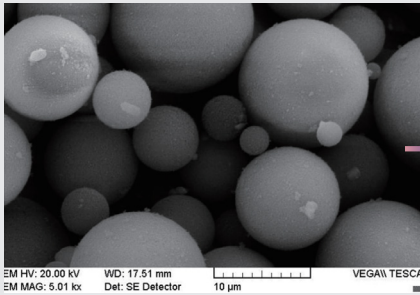
B.C.C

Bead Type Colorant Complex

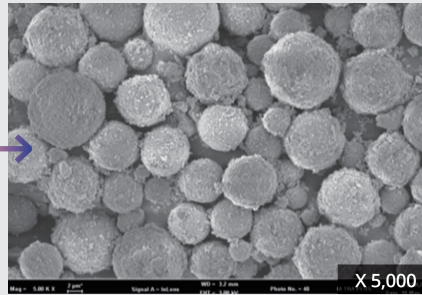


Ingredients	Composition(%)	Remark
Silica	50 ~ 85	Based on Spherical Silica Bead
Colorant	15 ~ 50	for coloring effects with high chroma

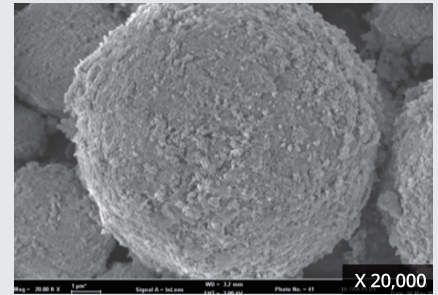
SEM Images



BCC-R#7

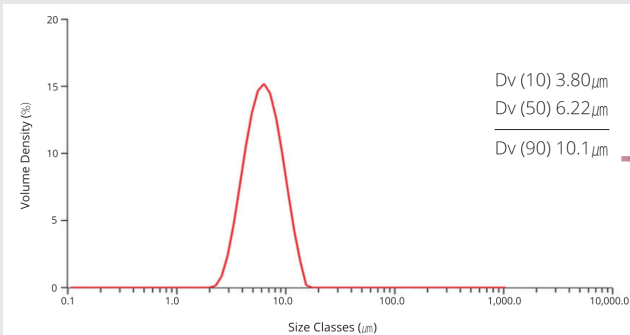


BCC-R#7

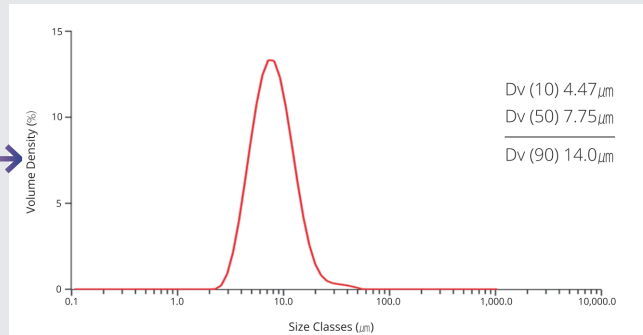


Particle Analysis

Silica Bead



BCC-R#7



CHARACTERISTICS

B.C.C. mainly gives luxurious and silky feeling to cosmetic formulation without blocking skin pores containing properties below as well













- Uniform and High density colorant dispersion
- Vivid color and elegant color expression
- Superior Anti-caking Property
- Absorbs sweat and sebum, eliminating excessive shine and making natural makeup
- Superb adhesion to skin and water repellency, and long lasting makeup
- Very soft feel on the skin

B.C.C

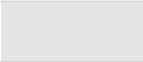
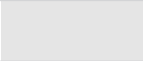




APPLICATION

- Make up
- Lipstick
- Eye shadow
- Blush on Rouge
- Foundation
- BB Cream
- Mascara & Eye liner

B.C.C. Organic Colorants

Product name	color	Available Base		Colorants	Colorants wt(%)	Remarks
		Silica				
BCC-R#6		●		Red#6 Lake	15	
BCC-R#7		●		Red#7 Lake	15	
BCC-R#27		●		Red#27 Lake	15	
BCC-R#28		●		Red#28 Lake	15	For available surface treatment
BCC-R#30		●		Red#30 Lake	15	• Methicone
BCC-R#40		●		Red#40 Lake	50	• Dimethicone
BCC-Carmine		●		Carmine	40	• Triethoxy caprylsilane –Hydrophobic and soft feeling
BCC-Y#5		●		Yellow#5 Lake	50	• Hydro PS – Coated with Hydrophilic Silane compounds – with excellent water dispersible
BCC-Y#6		●		Yellow#6 Lake	50	
BCC-M.V		●		Manganese Violet	40	
BCC-U.M.B		●		Ultra Marine Blue	40	
BCC-Blue#1		●		Blue#1	40	

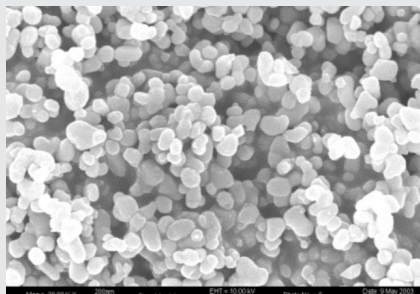
B.C.C Inorganic Colorants

Product name	color	Available Base		Colorants	Colorants wt(%)	Remarks
		Silica				
BCC-ZnO		●		ZnO	50	For available surface treatment
BCC-TiO ₂		●		TiO ₂	50	• Methicone
BCC-IOY		●		FeO(OH)	50	• Dimethicone
BCC-IOR		●		Fe ₂ O ₃	50	• Triethoxy caprylsilane –Hydrophobic and soft feeling
BCC-IOBr		●			50	• Hydro PS – Coated with Hydrophilic Silane compounds – with excellent water dispersible
BCC-Blue		●		Ferric Feerocyanide	20	

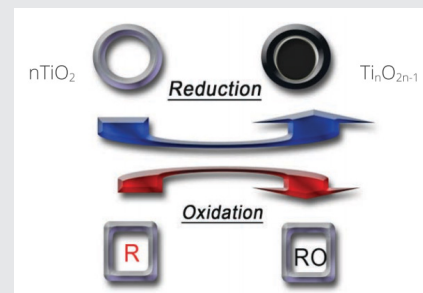
TIXEL BLACK

Black TiO_2 , TiO_{2n-1}

Tixen Black's SEM Image



Manufacturing Process



INCI Name	Titanium/Titanium dioxide
CI Number	778925 (C.I. Pigment Black 37)
Blackness(L*)	13 ~18
Heavy Metal	Pb < 10ppm, As < 1 ppm
pH	4.0 ~ 8.0
Av. Particle Size	< 1 μm

CHARACTERISTICS

Tixen Black is pure black Titanium dioxide

- Useful at make up formulation ; mascara, eyeliner and etc
- Higher blackness than brownish iron Oxide Black
- No heavy metal compound(Pb, As) ; stable on the skin
- Thermal stability and acid & alkali resistance

PROPERTY

- Clear & deep Black color
 - Hydrophilic property
 - Easy dispersion in water
 - Low irritation on the skin
 - Stable at High temperature
 - Low oil absorption
-



RM#408, 6, Heungdeok 2-ro 105beon-gil,
Giheung-gu, Yongin-si, Gyeonggi-do, Korea
(Post Num 16953)

031-221-6782 | www.fewm.co.kr